



# Euan's Guide Access Survey 2021



Every year Euan's Guide ask people what they think about disabled access.



We ask you questions and you can post or email your answers to us.

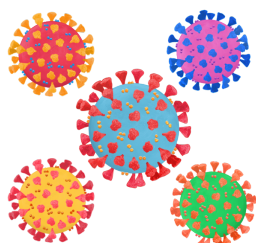


Answering the questions will take about twenty minutes.



We want to know about three subjects and you can choose what you want to answer.

We will ask you about:



**Covid and what you think about it**



**Disabled access to places you visit**



**The toilets in places you visit**



## **Have you heard about us before?**

We will ask you if you have heard about Euan's Guide and the Motability Scheme.

## **Euan's Guide**

Euan's Guide helps people to find places to visit and tells you about the disabled access information.

When you take part in the survey you can choose to be entered into a draw to win one of five £25 Amazon vouchers.

## **Motability**

Motability helps disabled people get out and about by providing cars, scooters and powered wheelchairs.

## Let's start the survey

Here are the questions we want you to think about

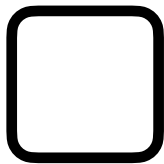




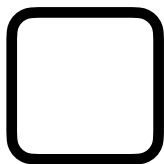
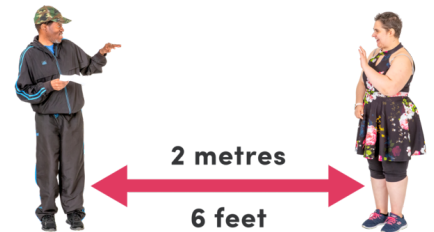
# Covid Concerns and Precautions



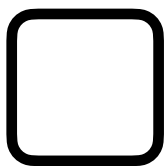
When you go out to visit places do you worry about any of these things:



Social Distancing - other people not respecting distances



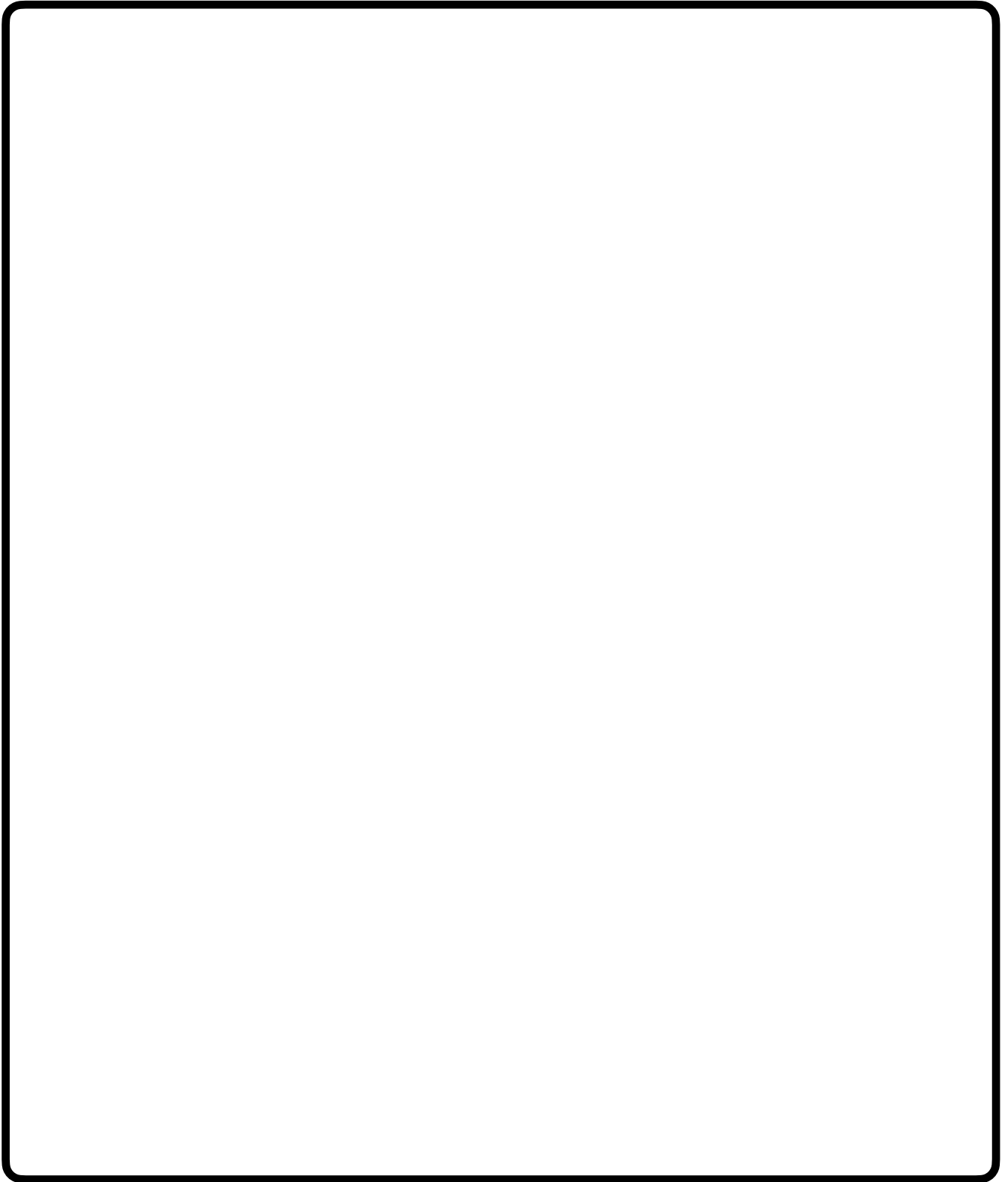
Masks - people not wearing masks



Toilets - venue toilets and public toilets being shut



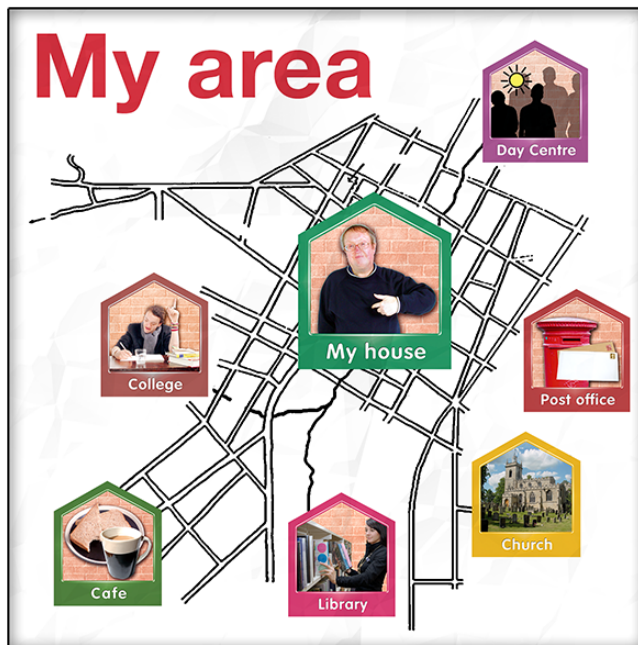
Do you have any other concerns when you visit new places?





Would you like to tell us more about any precautions you would like venues to consider?

Things people can do to help you feel safer when you visit places.



Which, if any, of these types of places or activities do you visit?

☐

Zoos, theme parks or playgrounds

☐

Football matches, festivals or picnics

☐

Museums, cathedrals or art galleries

☐

Cinema, theatre or drama groups

☐

Restaurants, cafes, bars etc.)

☐

Parks, beaches or forests

Other places you visit or things you go out to do

How do you travel to your visits?

☐

Walk

☐

Cycle

☐

Taxi

☐

Bus

☐

Car

☐

Train

How will you find Covid information before you decide to visit?

☐

I will contact the venue directly

☐

I will check their website

☐

I will ask my friends

☐

I will use Euan's Guide

☐

I will search the internet

Other



**Do you think:**

Has Covid made disabled access better or worse?

Yes

No

About the same

Don't know

☐☐☐☐

Has Covid made access to toilets better or worse?

Yes

No

About the same

Don't know

☐☐☐☐



## Disabled Access

In this section, we're asking for your thoughts on disabled access in general.



When you visit a new place do you like to find out about it before you go?

Yes

No

Don't know

☐☐☐

What would put you off visiting somewhere new?

Euan's Guide will be selecting one National Venue of the Year from suggested favourite places. We will have Regional Venues of the Year too. If you have a favourite place you visit that others can visit too then you can share it here.



What is your favourite place to visit and why?

## Accessible Toilets



Have you ever come across an accessible toilet that you were unable to use?

Yes

☐

No

☐

Don't know

☐

Have you ever avoided going somewhere because it didn't have an accessible toilet

Yes

☐

No

☐

Don't know

☐

Have you ever avoided going somewhere because you couldn't find information about an accessible toilet

Yes

☐

No

☐

Don't know

☐

Have you ever avoided going somewhere because you knew it didn't have a Changing Places toilet

Yes

No

Don't know

☐☐☐

Have you ever avoided going somewhere because you couldn't find any information about a Changing Places toilet

Yes

No

Don't know

☐☐☐

Is there anything else you wish to tell us about accessible toilets?

## About Euan's Guide



Euan's Guide is the award-winning disabled access charity.



We're best known for our disabled access review website where disabled people can find and share reviews on the accessibility of places they visit.

Have you heard of Euan's Guide before taking the Access Survey today?

Yes

No

Don't know

☐☐☐

## The Motability Scheme

The 2021 Euan's Guide Access Survey is being supported by Motability Operations, the company behind the Motability Scheme, for the first time.

Through the Motability Scheme those in receipt of an eligible allowance (HRMC of DLA; ERM of PIP; WPMS or AFIP) can achieve greater independence and everyday freedom by exchanging the qualifying mobility allowance to lease a new affordable car, Wheelchair Accessible Vehicle, scooter or powered wheelchair.

Are you aware of the Motability Scheme

Yes

☐

No

☐

Don't know

☐

## About you

You're almost done! We just have a few questions about you. Remember these are all optional.

Don't forget to enter your email address if you wish to be entered into a draw for one of five £25 Amazon vouchers.

Where do you live?

☐

England

☐

Scotland

☐

Wales

☐

Northern Ireland

Other



I would like to:

☐

To be entered into the £25 Amazon voucher draw

☐

To receive a copy of the survey results

☐

To receive information from Euan's Guide

☐

To receive information about the Motability Scheme

☐

None of the above

Please enter your email address if you want to

That's the end of the survey.

## **Sending us your answers**

You can send us your answers by:

Post

Euan's Guide

Codebase

Argyll House

3 Lady Lawson Street

Edinburgh

EH3 9DR

Email

[hello@euansguide.com](mailto:hello@euansguide.com)

Telephone

0131 510 5106

Easy Read - Pictures by Photosymbols

